

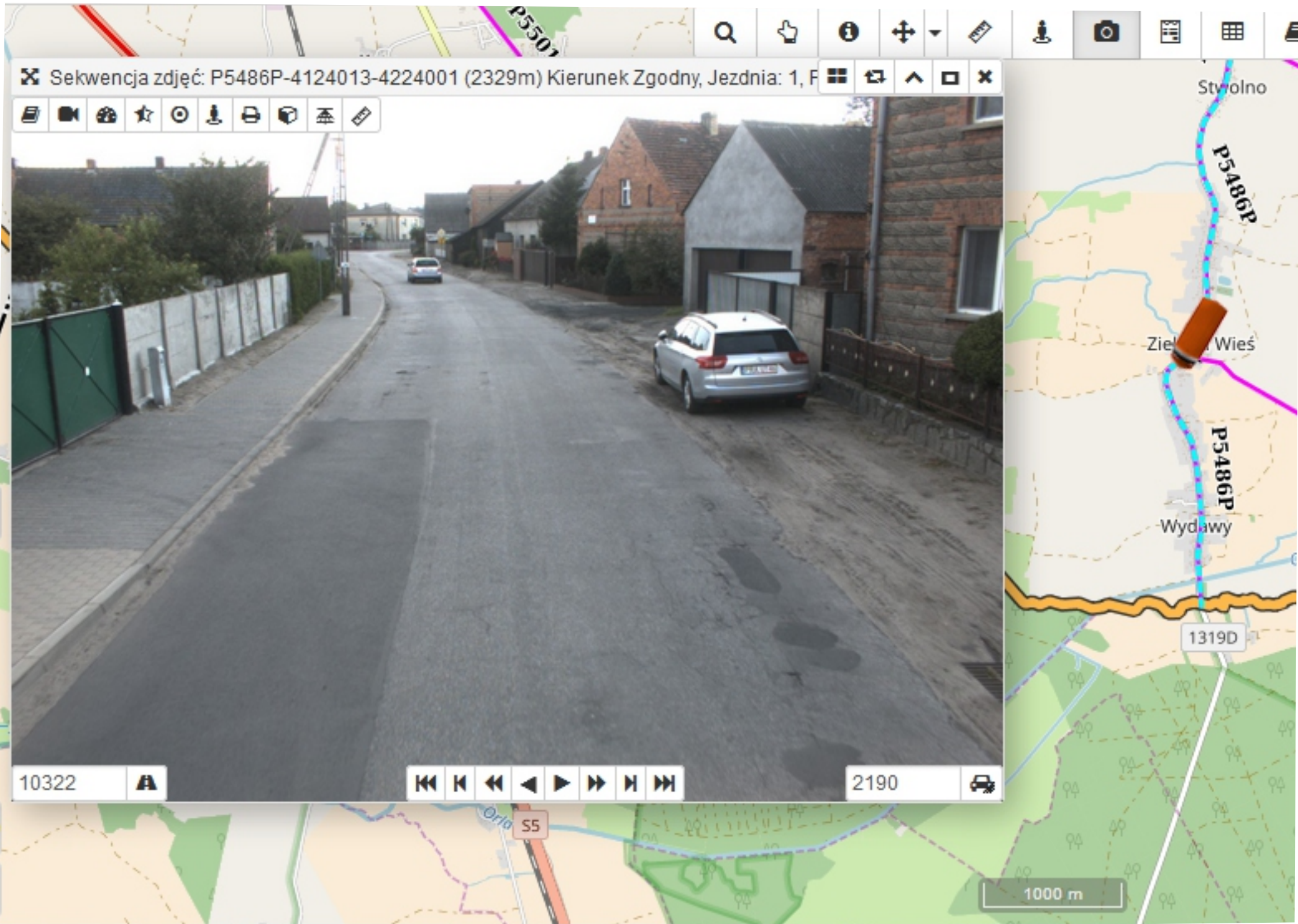
The screenshot displays a 3D mapping application interface. The main view is a street-level perspective of a paved road curving to the right, bordered by a sidewalk and greenery. Above the street view is a toolbar with various icons for navigation and editing. Below the street view is a control bar with playback controls and a scale indicator.

Top Toolbar: Includes icons for search, pan, info, zoom in/out, and other navigation functions.

Text Bar: Displays the sequence ID: "Sekwencja zdjęć: P5486P-4124013-4224001 (2329m) Kierunek Zgodny, Jezdnia: 1, F".

Map View (Right): Shows a 2D map with a blue line indicating the camera path. Key locations labeled include "Styrolno", "Zielona Wieś", and "Wydawny". A red marker labeled "P5486P" is positioned on the path. A road label "1319D" is also visible.

Bottom Control Bar: Features playback controls (stop, previous, play, next, end) and a scale indicator showing "9382" and "1250".



GINGER

LEHMANN+PARTNER

004

Adres Współrzędne Działki

Sekwencja zdjęć: P5486P-4224001-4224003 (1939m) Kierunek Zgodny, Jezdnia: 1, F

001

Zielona Wieś

P5488P

10

P5486P

50

Wydawny

10

P5488P

500 m

11491 **A** 1030

GINGER

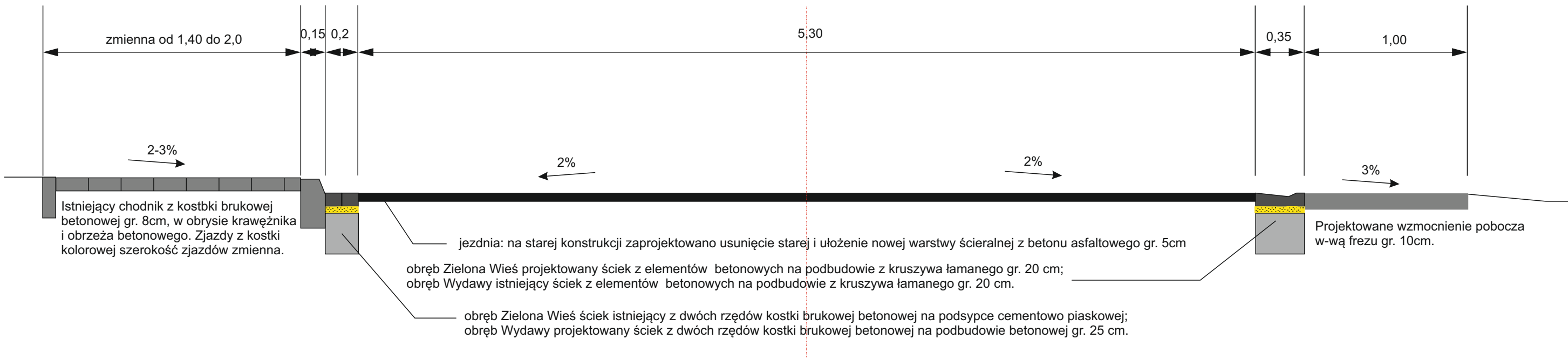
LEHMANN+PARTNER

The screenshot displays the GINGER LEHMANN+PARTNER software interface, which is used for road design and visualization. The main window is divided into several sections:

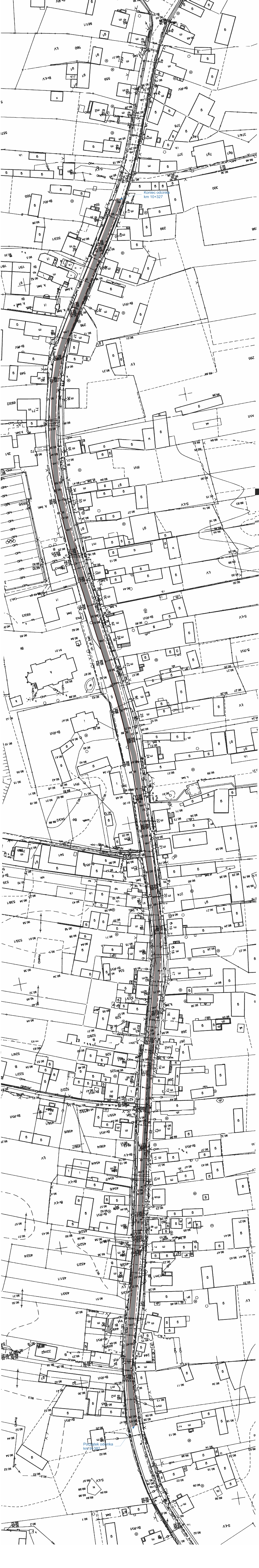
- Top Bar:** Contains navigation and tool icons such as search, pan, zoom, and various drawing tools.
- Map View (Right):** A 2D map showing the project location. A red box labeled "001" is visible. The map includes labels for "Zielona Wieś" and "Wydmory". A red line indicates the road alignment, with labels "P5486P" and "P5488P". A scale bar at the bottom right indicates 500 m.
- 3D View (Left):** A perspective view of the road model. A yellow grid is overlaid on the road surface, with labels -3, -2, -1, 0, 1, 2, 3 along the horizontal axis and +2, 0, -1, -2, -3, -4, -5, -6 along the vertical axis. The road is flanked by buildings and trees.
- Bottom Bar:** Includes a "Kilometaż globalny" (Global Kilometerage) label, a numerical value "11731", a small "A" icon, a set of navigation controls (back, forward, etc.), and another numerical value "1270".

Additional information visible in the interface includes a search bar with the text "Sekwencja zdjęć: P5486P-4224001-4224003 (1939m) Kierunek Zgodny, Jezdnia: 1, F" and a toolbar with icons for various functions like camera, scale, and data management.

przekrój konstrukcyjny drogi
skala 1:25



S-RVI



Koniec odcinka
km 10+327

Początek odcinka
km 9+382