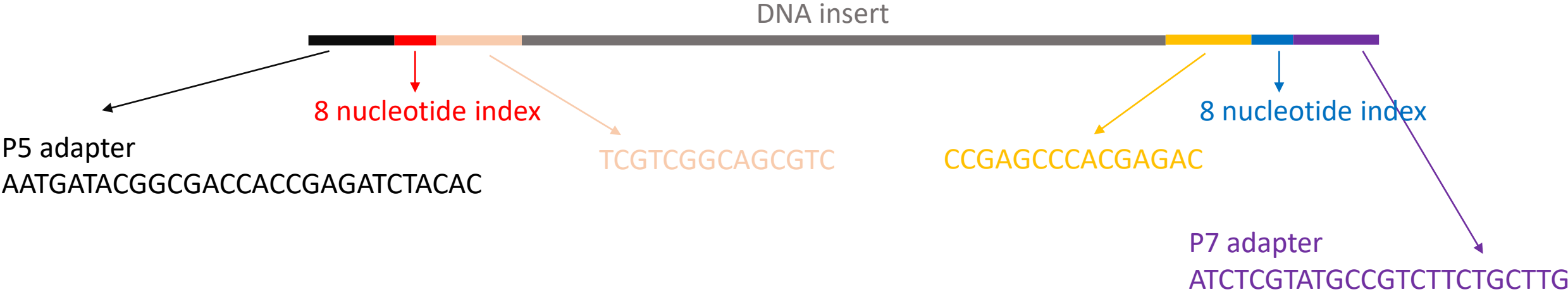


Structure of the libraries

Size of the libraries ~600 bp



Primer sequences for the library generation

oligo.name	sequence 5'-->3'
N701	CAAGCAGAAGACGGCATAACGAGATTCGCCTTAGTCTCGTGGGCTCGG
N702	CAAGCAGAAGACGGCATAACGAGATCTAGTACGGTCTCGTGGGCTCGG
N703	CAAGCAGAAGACGGCATAACGAGATTTCTGCCTGTCTCGTGGGCTCGG
N704	CAAGCAGAAGACGGCATAACGAGATGCTCAGGAGTCTCGTGGGCTCGG
N705	CAAGCAGAAGACGGCATAACGAGATAGGAGTCCGTCTCGTGGGCTCGG
N706	CAAGCAGAAGACGGCATAACGAGATCATGCCTAGTCTCGTGGGCTCGG
N707	CAAGCAGAAGACGGCATAACGAGATGTAGAGAGGTCTCGTGGGCTCGG
N708	CAAGCAGAAGACGGCATAACGAGATCCTCTCTGGTCTCGTGGGCTCGG
N709	CAAGCAGAAGACGGCATAACGAGATAGCGTAGCGTCTCGTGGGCTCGG
N710	CAAGCAGAAGACGGCATAACGAGATCAGCCTCGGTCTCGTGGGCTCGG
N711	CAAGCAGAAGACGGCATAACGAGATTGCCTCTTGTCTCGTGGGCTCGG
N712	CAAGCAGAAGACGGCATAACGAGATTCTCTACGTCTCGTGGGCTCGG
N714	CAAGCAGAAGACGGCATAACGAGATTCATGAGCGTCTCGTGGGCTCGG
N715	CAAGCAGAAGACGGCATAACGAGATCCTGAGATGTCTCGTGGGCTCGG
N716	CAAGCAGAAGACGGCATAACGAGATTAGCGAGTGTCTCGTGGGCTCGG
N718	CAAGCAGAAGACGGCATAACGAGATGTAGCTCCGTCTCGTGGGCTCGG
N719	CAAGCAGAAGACGGCATAACGAGATTACTACGCGTCTCGTGGGCTCGG
N720	CAAGCAGAAGACGGCATAACGAGATAGGCTCCGGTCTCGTGGGCTCGG
N721	CAAGCAGAAGACGGCATAACGAGATGCAGCGTAGTCTCGTGGGCTCGG
N722	CAAGCAGAAGACGGCATAACGAGATCTGCGCATGTCTCGTGGGCTCGG
N723	CAAGCAGAAGACGGCATAACGAGATGAGCGCTAGTCTCGTGGGCTCGG
N724	CAAGCAGAAGACGGCATAACGAGATCGTCTAGTGTCTCGTGGGCTCGG
N726	CAAGCAGAAGACGGCATAACGAGATGTCTTAGGGTCTCGTGGGCTCGG
N727	CAAGCAGAAGACGGCATAACGAGATACTGATCGGTCTCGTGGGCTCGG

oligo.name	sequence 5'-->3'
S501	AATGATACGGCGACCACCGAGATCTACACTAGATCGCTCGTCGGCAGCGTC
S502	AATGATACGGCGACCACCGAGATCTACACCTCTCTATTTCGTCTCGGCAGCGTC
S503	AATGATACGGCGACCACCGAGATCTACACTATCCTCTTCGTCTCGGCAGCGTC
S504	AATGATACGGCGACCACCGAGATCTACACAGAGTAGATCGTCGGCAGCGTC
S505	AATGATACGGCGACCACCGAGATCTACACGTAAGGAGTCGTCTCGGCAGCGTC
S506	AATGATACGGCGACCACCGAGATCTACACACTGCATATCGTCGGCAGCGTC
S507	AATGATACGGCGACCACCGAGATCTACACAAGGAGTATCGTCGGCAGCGTC
S508	AATGATACGGCGACCACCGAGATCTACACCTAAGCCT TCGTCGGCAGCGTC
S509	AATGATACGGCGACCACCGAGATCTACACGGCTACTCTCGTCGGCAGCGTC
S510	AATGATACGGCGACCACCGAGATCTACACCCTCAGACTCGTCGGCAGCGTC
S511	AATGATACGGCGACCACCGAGATCTACACTCCTTACGTCTCGTCGGCAGCGTC
S512	AATGATACGGCGACCACCGAGATCTACACACGCGTGGTCGTCTGGCAGCGTC
S513	AATGATACGGCGACCACCGAGATCTACACGGAACCTCTCGTCGGCAGCGTC
S514	AATGATACGGCGACCACCGAGATCTACACTGGCCATGTCTCGTCGGCAGCGTC
S515	AATGATACGGCGACCACCGAGATCTACACGAGAGATTTTCGTCTGGCAGCGTC
S516	AATGATACGGCGACCACCGAGATCTACACCGCGGTTATCGTCGGCAGCGTC
S517B	AATGATACGGCGACCACCGAGATCTACACGACCGCCATCGTCGGCAGCGTC
S518	AATGATACGGCGACCACCGAGATCTACACTAAGATGGTCTCGTCGGCAGCGTC
S519	AATGATACGGCGACCACCGAGATCTACACATTGACATTTCGTCTGGCAGCGTC
S520	AATGATACGGCGACCACCGAGATCTACACAGCCAACCTTCGTCTGGCAGCGTC
S521	AATGATACGGCGACCACCGAGATCTACACTACTAGGTTTCGTCTGGCAGCGTC
S522	AATGATACGGCGACCACCGAGATCTACACTCACGGTTTTCGTCTGGCAGCGTC
S523	AATGATACGGCGACCACCGAGATCTACACTGTAATGATCGTCGGCAGCGTC
S524	AATGATACGGCGACCACCGAGATCTACACCACGTCAAGTCGTCTGGCAGCGTC
S525	AATGATACGGCGACCACCGAGATCTACACCGTCTAATTCGTCTGGCAGCGTC
S526	AATGATACGGCGACCACCGAGATCTACACTCTCTCCGTCTCGTCGGCAGCGTC
S527	AATGATACGGCGACCACCGAGATCTACACTCGACTAGTCGTCTGGCAGCGTC
S528	AATGATACGGCGACCACCGAGATCTACACTTCTAGCTTCGTCTGGCAGCGTC
S529	AATGATACGGCGACCACCGAGATCTACACCCTAGAGTTTCGTCTGGCAGCGTC
S530	AATGATACGGCGACCACCGAGATCTACACGCGTAAGATCGTCGGCAGCGTC
S531	AATGATACGGCGACCACCGAGATCTACACCTATTAAGTCGTCTGGCAGCGTC
S532	AATGATACGGCGACCACCGAGATCTACACAAGGCTATTCGTCTGGCAGCGTC
S533	AATGATACGGCGACCACCGAGATCTACACTTATGCGATCGTCGGCAGCGTC
S534	AATGATACGGCGACCACCGAGATCTACACTGAACCTTTTCGTCTGGCAGCGTC
S535	AATGATACGGCGACCACCGAGATCTACACTGCTAAGTTTCGTCTGGCAGCGTC
S536	AATGATACGGCGACCACCGAGATCTACACTGTTCTCTTCGTCTGGCAGCGTC
S537	AATGATACGGCGACCACCGAGATCTACACCTAATCGATCGTCGGCAGCGTC
S538	AATGATACGGCGACCACCGAGATCTACACTAAGTTCTTCGTCTGGCAGCGTC
S539	AATGATACGGCGACCACCGAGATCTACACTAGACCTATCGTCGGCAGCGTC
S540	AATGATACGGCGACCACCGAGATCTACACGCCATTGATCGTCGGCAGCGTC

Plate 1		N701	N702	N703	N704	N705	N706	N707	N708	N709	N710	N711	N712
	S501	1	9	17	25	49	33	41	57	65	73	81	89
	S502	2	10	18	26	50	34	42	58	66	74	82	90
	S503	3	11	19	27	51	35	43	59	67	75	83	91
	S504	4	12	20	28	52	36	44	60	68	76	84	92
	S505	5	13	21	29	53	37	45	61	69	77	85	93
	S506	6	14	22	30	54	38	46	62	70	78	86	94
	S507	7	15	23	31	55	39	47	63	71	79	87	95
	S508	8	16	24	32	56	40	48	64	72	80	88	96
Plate 2		N714	N715	N716	N718	N719	N720	N721	N722	N723	N724	N726	N727
	S501	97	105	113	121	129	137	145	153	161	169	177	185
	S502	98	106	114	122	130	138	146	154	162	170	178	186
	S503	99	107	115	123	131	139	147	155	163	171	179	187
	S504	100	108	116	124	132	140	148	156	164	172	180	188
	S505	101	109	117	125	133	141	149	157	165	173	181	189
	S506	102	110	118	126	134	142	150	158	166	174	182	190
	S507	103	111	119	127	135	143	151	159	167	175	183	191
	S508	104	112	120	128	136	144	152	160	168	176	184	192
Plate 3		N701	N702	N703	N704	N705	N706	N707	N708	N709	N710	N711	N712
	S509	193	201	209	217	225	233	241	249	257	265	273	281
	S510	194	202	210	218	226	234	242	250	258	266	274	282
	S511	195	203	211	219	227	235	243	251	259	267	275	283
	S512	196	204	212	220	228	236	244	252	260	268	276	284
	S513	197	205	213	221	229	237	245	253	261	269	277	285
	S514	198	206	214	222	230	238	246	254	262	270	278	286
	S515	199	207	215	223	231	239	247	255	263	271	279	287
	S516	200	208	216	224	232	240	248	256	264	272	280	288
Plate 4		N714	N715	N716	N718	N719	N720	N721	N722	N723	N724	N726	N727
	S509	289	297	305	313	321	329	337	345	353	361	369	377
	S510	290	298	306	314	322	330	338	346	354	362	370	378
	S511	291	299	307	315	323	331	339	347	355	363	371	379
	S512	292	300	308	316	324	332	340	348	356	364	372	380
	S513	293	301	309	317	325	333	341	349	357	365	373	381
	S514	294	302	310	318	326	334	342	350	358	366	374	382
	S515	295	303	311	319	327	335	343	351	359	367	375	383
	S516	296	304	312	320	328	336	344	352	360	368	376	384

Plate 5		N701	N702	N703	N704	N705	N706	N707	N708	N709	N710	N711	N712
	S517B	385	393	401	409	417	425	433	441	449	457	465	473
	S518	386	394	402	410	418	426	434	442	450	458	466	474
	S519	387	395	403	411	419	427	435	443	451	459	467	475
	S520	388	396	404	412	420	428	436	444	452	460	468	476
	S521	389	397	405	413	421	429	437	445	453	461	469	477
	S522	390	398	406	414	422	430	438	446	454	462	470	478
	S523	391	399	407	415	423	431	439	447	455	463	471	479
	S524	392	400	408	416	424	432	440	448	456	464	472	480
Plate 6		N714	N715	N716	N718	N719	N720	N721	N722	N723	N724	N726	N727
	S517B	481	489	497	505	513	521	529	537	545	553	561	569
	S518	482	490	498	506	514	522	530	538	546	554	562	570
	S519	483	491	499	507	515	523	531	539	547	555	563	571
	S520	484	492	500	508	516	524	532	540	548	556	564	572
	S521	485	493	501	509	517	525	533	541	549	557	565	573
	S522	486	494	502	510	518	526	534	542	550	558	566	574
	S523	487	495	503	511	519	527	535	543	551	559	567	575
	S524	488	496	504	512	520	528	536	544	552	560	568	576
Plate 7		N701	N702	N703	N704	N705	N706	N707	N708	N709	N710	N711	N712
	S525	577	585	593	601	609	617	625	633	641	649	657	665
	S526	578	586	594	602	610	618	626	634	642	650	658	666
	S527	579	587	595	603	611	619	627	635	643	651	659	667
	S528	580	588	596	604	612	620	628	636	644	652	660	668
	S529	581	589	597	605	613	621	629	637	645	653	661	669
	S530	582	590	598	606	614	622	630	638	646	654	662	670
	S531	583	591	599	607	615	623	631	639	647	655	663	671
	S532	584	592	600	608	616	624	632	640	648	656	664	672
Plate 8		N714	N715	N716	N718	N719	N720	N721	N722	N723	N724	N726	N727
	S525	673	681	689	697	705	713	721	729	737	745	753	761
	S526	674	682	690	698	706	714	722	730	738	746	754	762
	S527	675	683	691	699	707	715	723	731	739	747	755	763
	S528	676	684	692	700	708	716	724	732	740	748	756	764
	S529	677	685	693	701	709	717	725	733	741	749	757	765
	S530	678	686	694	702	710	718	726	734	742	750	758	766
	S531	679	687	695	703	711	719	727	735	743	751	759	767
	S532	680	688	696	704	712	720	728	736	744	752	760	768

Plate 9		N701	N702	N703	N704	N705	N706	N707	N708	N709	N710	N711	N712
	S533	769	777	785	793	801	809	817	825	833	841	849	857
	S534	770	778	786	794	802	810	818	826	834	842	850	858
	S535	771	779	787	795	803	811	819	827	835	843	851	859
	S536	772	780	788	796	804	812	820	828	836	844	852	860
	S537	773	781	789	797	805	813	821	829	837	845	853	861
	S538	774	782	790	798	806	814	822	830	838	846	854	862
	S539	775	783	791	799	807	815	823	831	839	847	855	863
	S540	776	784	792	800	808	816	824	832	840	848	856	864
Plate 10		N714	N715	N716	N718	N719	N720	N721	N722	N723	N724	N726	N727
	S533	865	873	881	889	897	905	913	921	929	937	945	953
	S534	866	874	882	890	898	906	914	922	930	938	946	954
	S535	867	875	883	891	899	907	915	923	931	939	947	955
	S536	868	876	884	892	900	908	916	924	932	940	948	956
	S537	869	877	885	893	901	909	917	925	933	941	949	957
	S538	870	878	886	894	902	910	918	926	934	942	950	958
	S539	871	879	887	895	903	911	919	927	935	943	951	959
	S540	872	880	888	896	904	912	920	928	936	944	952	960