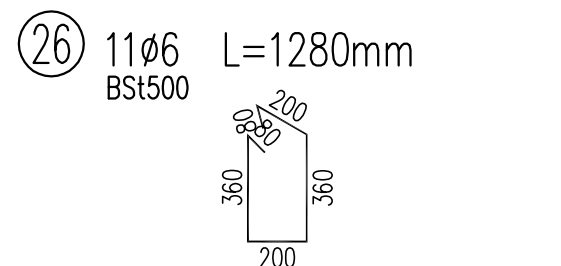
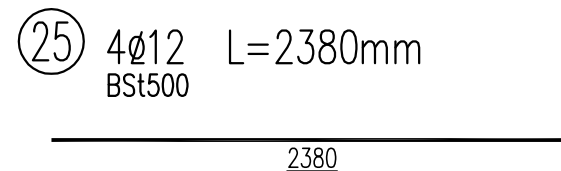
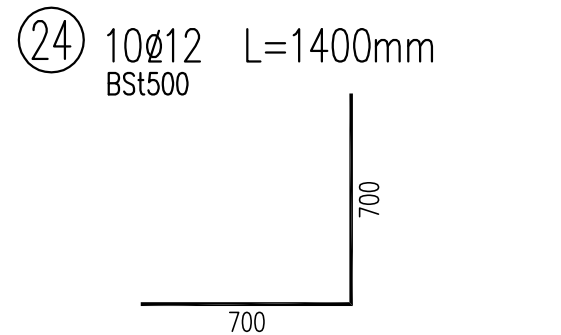
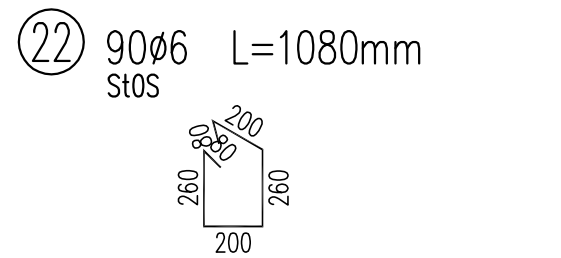
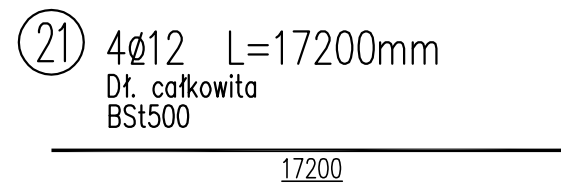
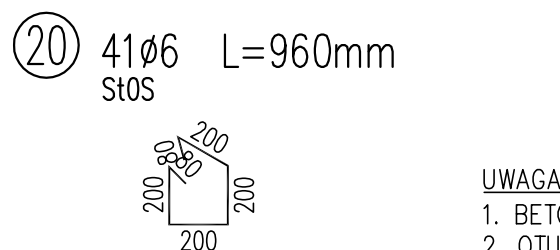
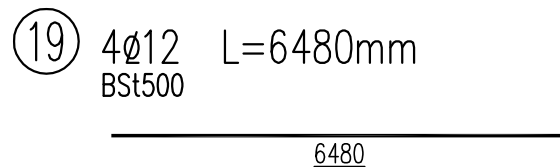
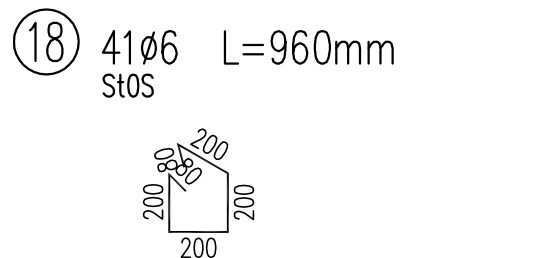
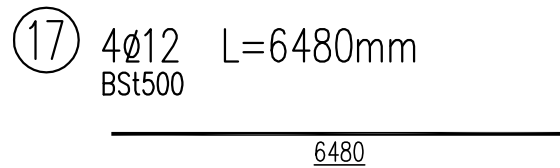
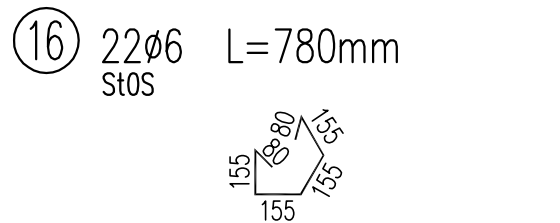
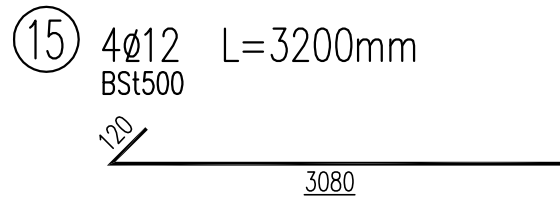
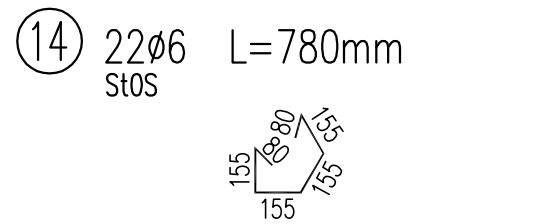
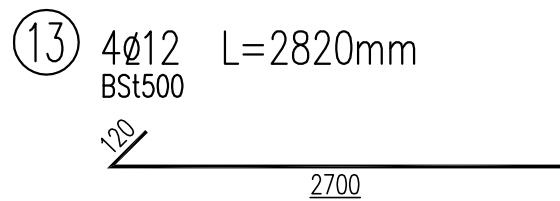


WYKAZ STALI ZBROJENIOWEJ  
DLA SŁUPÓW, WIĘNCÓW I PODCIĄGÓW  
skala 1:25



UWAGA:  
1. BETON B25 (C20/25), STAL ZBROJENIOWA BSt500, St0S.  
2. OTULINA ZBROJENIA c=20mm  
3. ŁĄCZENIE PRĘTÓW NA ZAKŁAD MIN. 480mm lub 40Ø

WYKAZ ZBROJENIA

| Nr<br>pręta      | Średnica | Liczba | Długość          | Długość ogólna [m] |        |
|------------------|----------|--------|------------------|--------------------|--------|
|                  | [mm]     | [szt]  | [mm]             | St0S               | BSt500 |
|                  |          |        |                  | Ø6                 | Ø12    |
| Element: SŻ-1    |          |        |                  |                    |        |
| 13               | Ø12      | 4      | 2820             |                    | 11.28  |
| 14               | Ø6       | 22     | 780              | 17.16              |        |
|                  |          |        |                  |                    |        |
| Długość razem    |          |        | [m]              | 17.16              | 11.28  |
| Masa jednostkowa |          |        | [kg/m]           | 0.222              | 0.888  |
| Masa razem       |          |        | [kg]             | 3.8                | 10     |
| Masa wg stali    |          |        | [kg]             | 4                  | 10     |
| Masa ogólna      |          |        | [kg]             | 14                 |        |
| Wykonać 2 szt.   |          |        | 2 x 14 = 28 kg   |                    |        |
|                  |          |        |                  |                    |        |
| Element: SŻ-2    |          |        |                  |                    |        |
| 15               | Ø12      | 4      | 3200             |                    | 12.8   |
| 16               | Ø6       | 22     | 780              | 17.16              |        |
|                  |          |        |                  |                    |        |
| Długość razem    |          |        | [m]              | 17.16              | 12.8   |
| Masa jednostkowa |          |        | [kg/m]           | 0.222              | 0.888  |
| Masa razem       |          |        | [kg]             | 3.8                | 11.4   |
| Masa wg stali    |          |        | [kg]             | 4                  | 11     |
| Masa ogólna      |          |        | [kg]             | 15                 |        |
| Wykonać 1 szt.   |          |        | 1 x 15 = 15 kg   |                    |        |
|                  |          |        |                  |                    |        |
| Element: PŻ-1    |          |        |                  |                    |        |
| 17               | Ø12      | 4      | 6480             |                    | 25.92  |
| 18               | Ø6       | 41     | 960              | 39.36              |        |
|                  |          |        |                  |                    |        |
| Długość razem    |          |        | [m]              | 39.36              | 25.92  |
| Masa jednostkowa |          |        | [kg/m]           | 0.222              | 0.888  |
| Masa razem       |          |        | [kg]             | 8.7                | 23     |
| Masa wg stali    |          |        | [kg]             | 9                  | 23     |
| Masa ogólna      |          |        | [kg]             | 32                 |        |
| Wykonać 1 szt.   |          |        | 1 x 32 = 32 kg   |                    |        |
|                  |          |        |                  |                    |        |
| Element: PŻ-2    |          |        |                  |                    |        |
| 19               | Ø12      | 4      | 6480             |                    | 25.92  |
| 20               | Ø6       | 41     | 960              | 39.36              |        |
|                  |          |        |                  |                    |        |
| Długość razem    |          |        | [m]              | 39.36              | 25.92  |
| Masa jednostkowa |          |        | [kg/m]           | 0.222              | 0.888  |
| Masa razem       |          |        | [kg]             | 8.7                | 23     |
| Masa wg stali    |          |        | [kg]             | 9                  | 23     |
| Masa ogólna      |          |        | [kg]             | 32                 |        |
| Wykonać 1 szt.   |          |        | 1 x 32 = 32 kg   |                    |        |
|                  |          |        |                  |                    |        |
| Element: WŻ-1    |          |        |                  |                    |        |
| 21               | Ø12      | 4      | 17200            |                    | 68.8   |
| 22               | Ø6       | 90     | 1080             | 97.2               |        |
| 23               | Ø12      | 20     | 1260             |                    | 25.2   |
| 24               | Ø12      | 10     | 1400             |                    | 14     |
|                  |          |        |                  |                    |        |
| Długość razem    |          |        | [m]              | 97.2               | 108    |
| Masa jednostkowa |          |        | [kg/m]           | 0.222              | 0.888  |
| Masa razem       |          |        | [kg]             | 21.6               | 95.9   |
| Masa wg stali    |          |        | [kg]             | 22                 | 96     |
| Masa ogólna      |          |        | [kg]             | 117                |        |
| Wykonać 1 szt.   |          |        | 1 x 117 = 117 kg |                    |        |
|                  |          |        |                  |                    |        |
| Element: WŻ-2    |          |        |                  |                    |        |
| 25               | Ø12      | 4      | 2380             |                    | 9.52   |
| 26               | Ø6       | 11     | 1280             | 14.08              |        |
|                  |          |        |                  |                    |        |
| Długość razem    |          |        | [m]              | 14.08              | 9.52   |
| Masa jednostkowa |          |        | [kg/m]           | 0.222              | 0.888  |
| Masa razem       |          |        | [kg]             | 3.1                | 8.5    |
| Masa wg stali    |          |        | [kg]             | 3                  | 8      |
| Masa ogólna      |          |        | [kg]             | 12                 |        |
| Wykonać 1 szt.   |          |        | 1 x 12 = 12 kg   |                    |        |

Beton: B25 (C20/25)

Stal zbroji:

St0S G = 46 kg

BSt500 G = 158 kg

Razem G = 204 kg

|   |   |                               |            |
|---|---|-------------------------------|------------|
| Pracownia Architektoniczna AR-KON               |   |                               |            |
| ul. Młyńska 4, 72-004 Tanowo                    |   |                               |            |
| tel. 601 627 494, e-mail: pracownia.arkon@wp.pl |   |                               |            |
| Faza:   | Projekt budowlany   |                               |            |
| Część:  | Konstrukcja   |                               |            |
| Temat:  | Rozbudowa i przebudowa budynku mieszkalnego jednorodzinnego |                               |            |
| Lokalizacja:                                    | Trzypole nr 1, działka nr 68/1, obręb Piasek, gmina Cedynia |                               |            |
| Treść:  | WYKAZ STALI ZBROJENIOWEJ KONSTRUKCJI ŻELBETOWYCH 1:25       |                               |            |
| Projektant:                                     | mgr inż. Konrad Roszak                                      | upr. bud. nr ZAP/0031/P00K/06 | 12.2016 r. |