

## **FISZ EMADE 2017**

**1xGrandMa 2 Light**

**14xRobe Pointe m1/Spot (markowych firm)**

**18xRobin 600 LedWash m3**

**10xJARAG**

**6xMolefay**

**2xFOG+wiatrak(maszyna dobrej jakości)**

**Wszystkie urządzenia muszą być w 100% sprawne!!!!**

**Jakiegolwiek zmiany urządzeń MUSZĄ być konsultowane z realizatorem minimum 7 dni przed koncertem.**

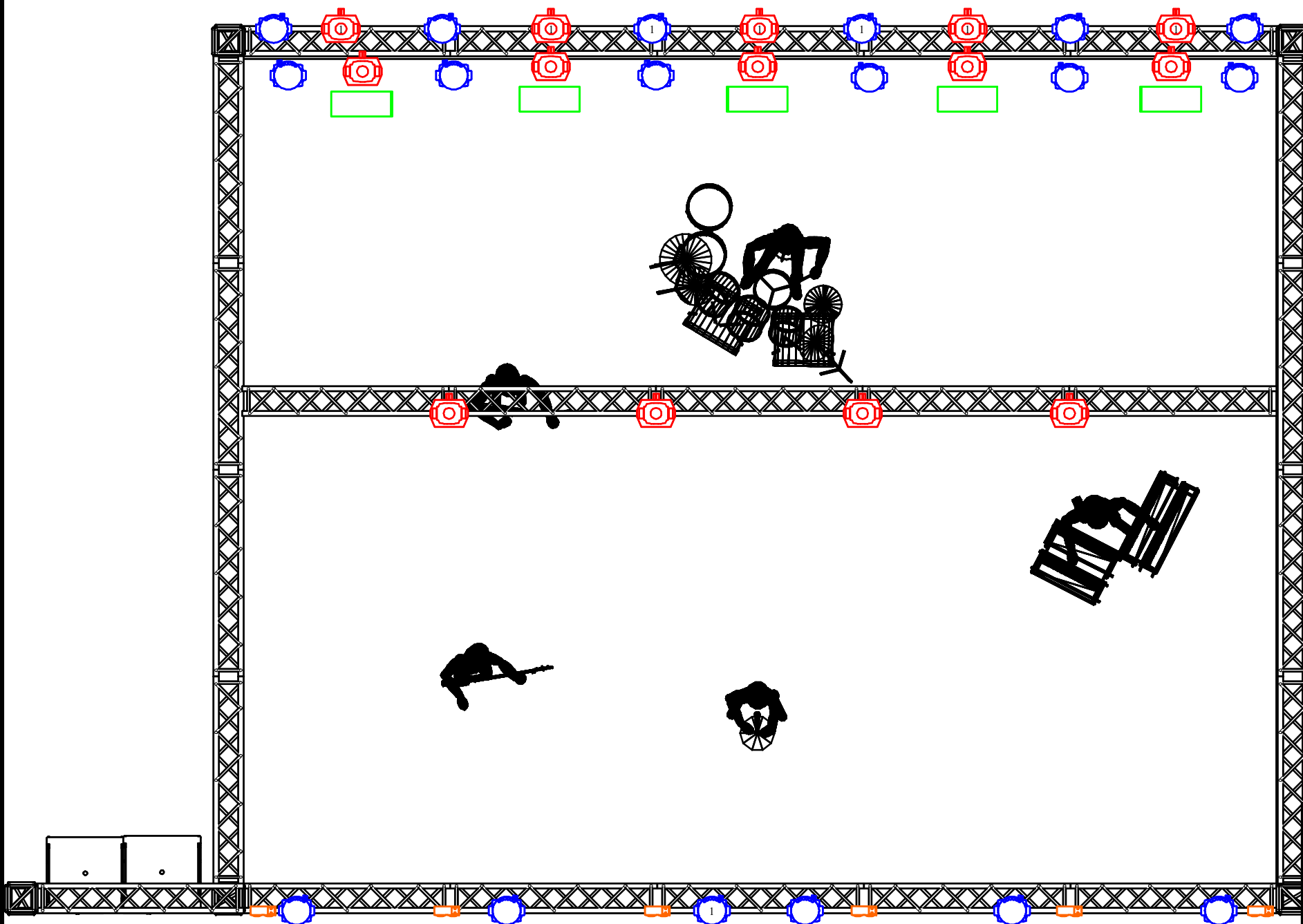
**Scena stabilna,atestowana.**

**Tył oraz boki sceny osłonięte czarnym materiałem,tył sceny wolny od banerów reklamowych.**

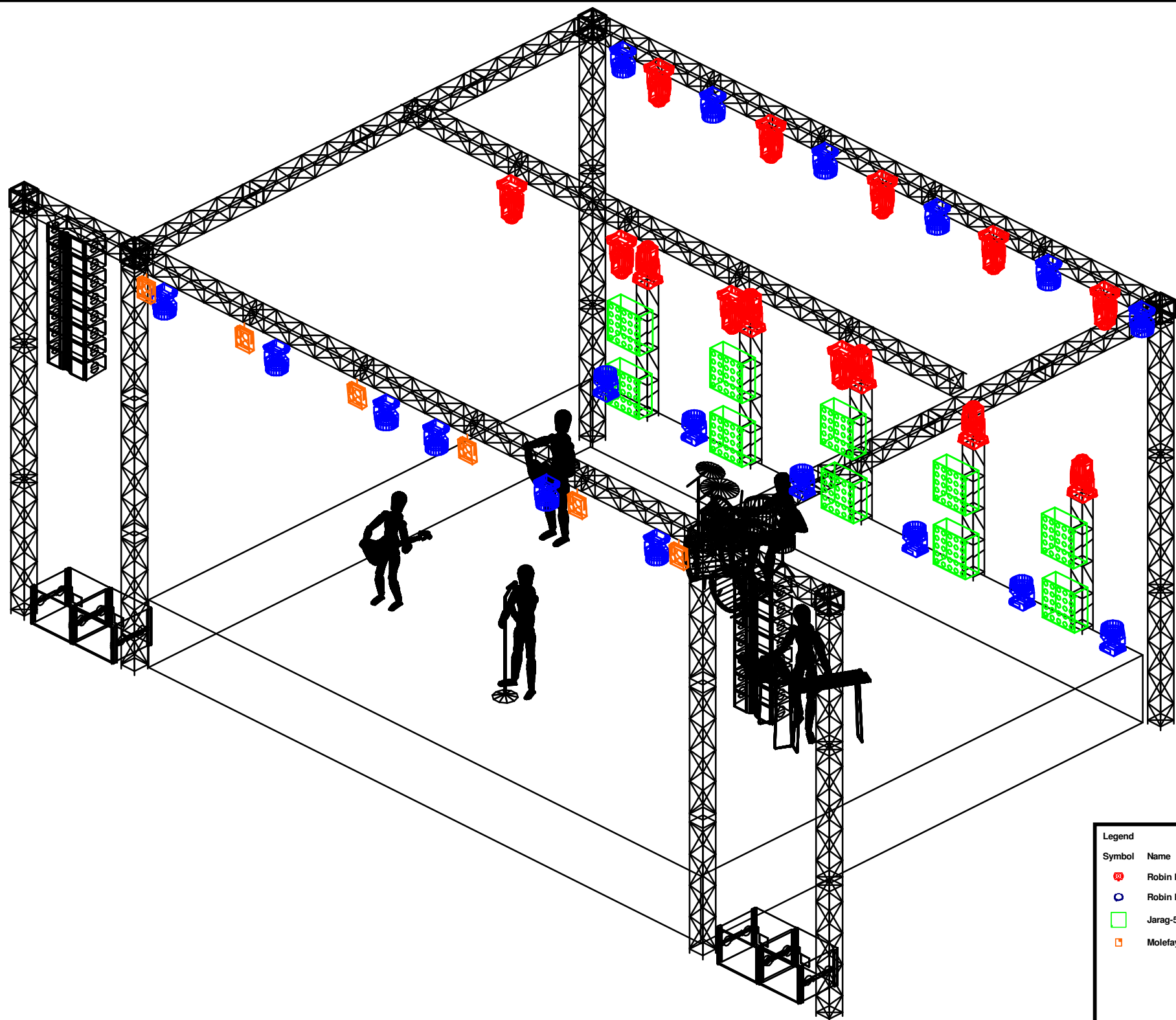
**Stanowisko realizatora ustawione na podwyższeniu centralnie do osi sceny.**





**Realizator:Patryk Kośnik tel.663-638-689**

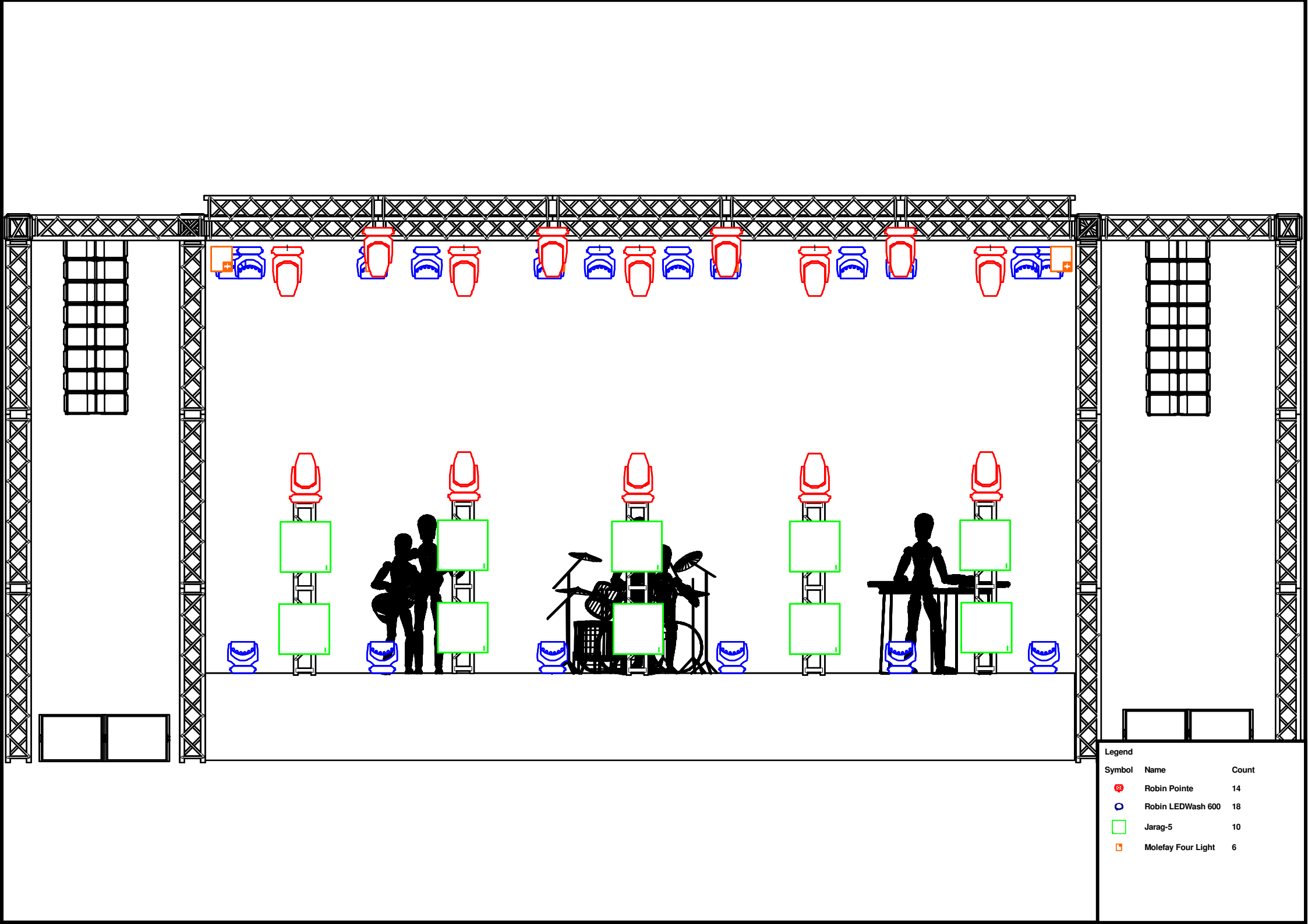
**mail:Karpik2828@gmail.com**






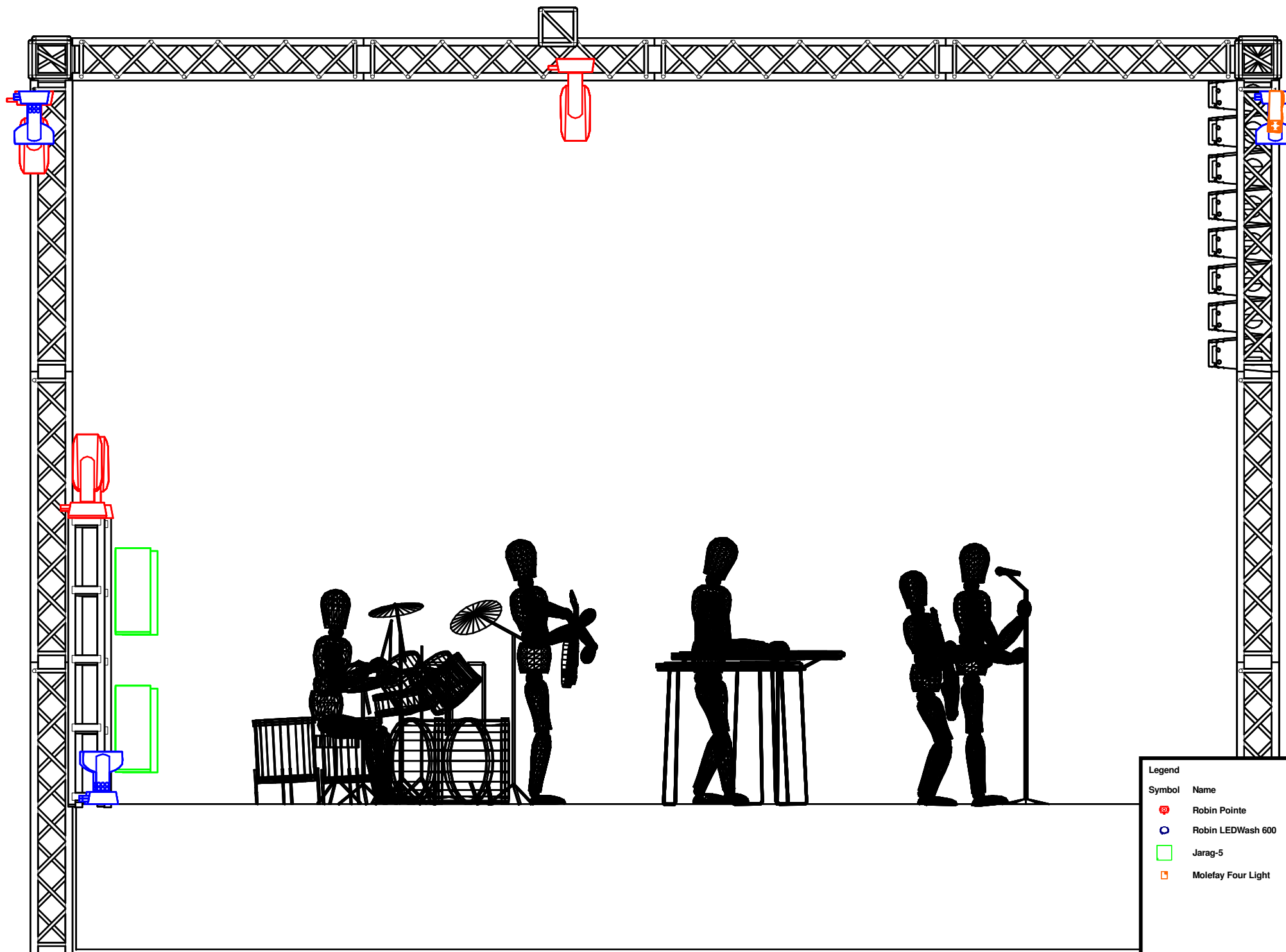
| Legend |                    |       |
|--------|--------------------|-------|
| Symbol | Name               | Count |
|        | Robin Pointe       | 14    |
|        | Robin LEDWash 600  | 18    |
|        | Jarag-5            | 10    |
|        | Molefay Four Light | 6     |







| Legend  |                    |       |
|---|--------------------|-------|
| Symbol  | Name               | Count |
|  | Robin Pointe       | 14    |
|  | Robin LEDWash 600  | 18    |
|  | Jarag-5            | 10    |
|  | Molefay Four Light | 6     |



| Legend  |                    |       |
|---|--------------------|-------|
| Symbol  | Name               | Count |
|  | Robin Pointe       | 14    |
|  | Robin LEDWash 600  | 18    |
|  | Jarag-5            | 10    |
|  | Molefay Four Light | 6     |



| Legend  |                    |       |
|---|--------------------|-------|
| Symbol  | Name               | Count |
|  | Robin Pointe       | 14    |
|  | Robin LEDWash 600  | 18    |
|  | Jarag-5            | 10    |
|  | Molefay Four Light | 6     |