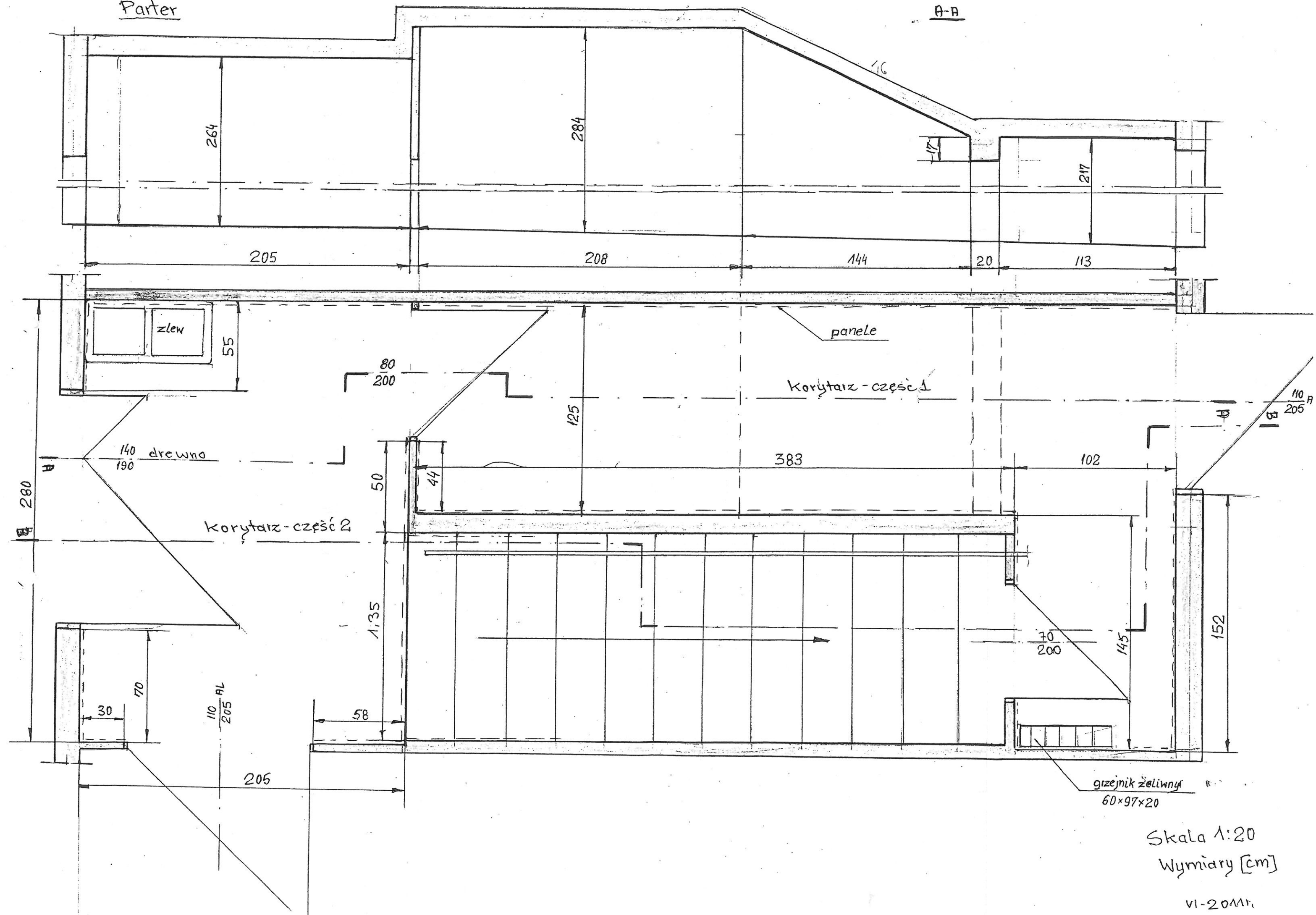


Parter

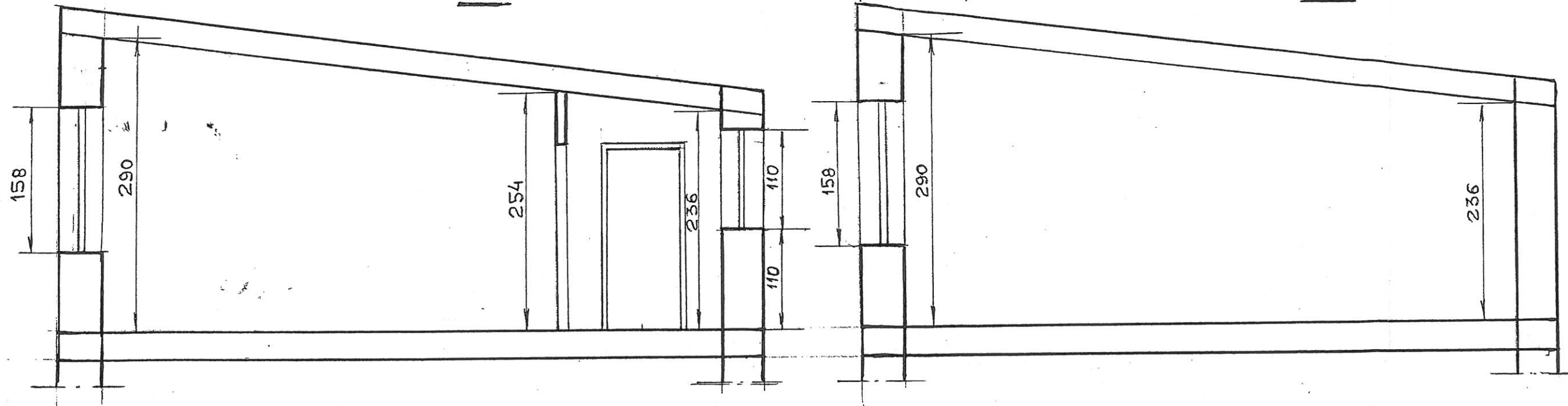
A-A



Skala 1:20
Wymiary [cm]

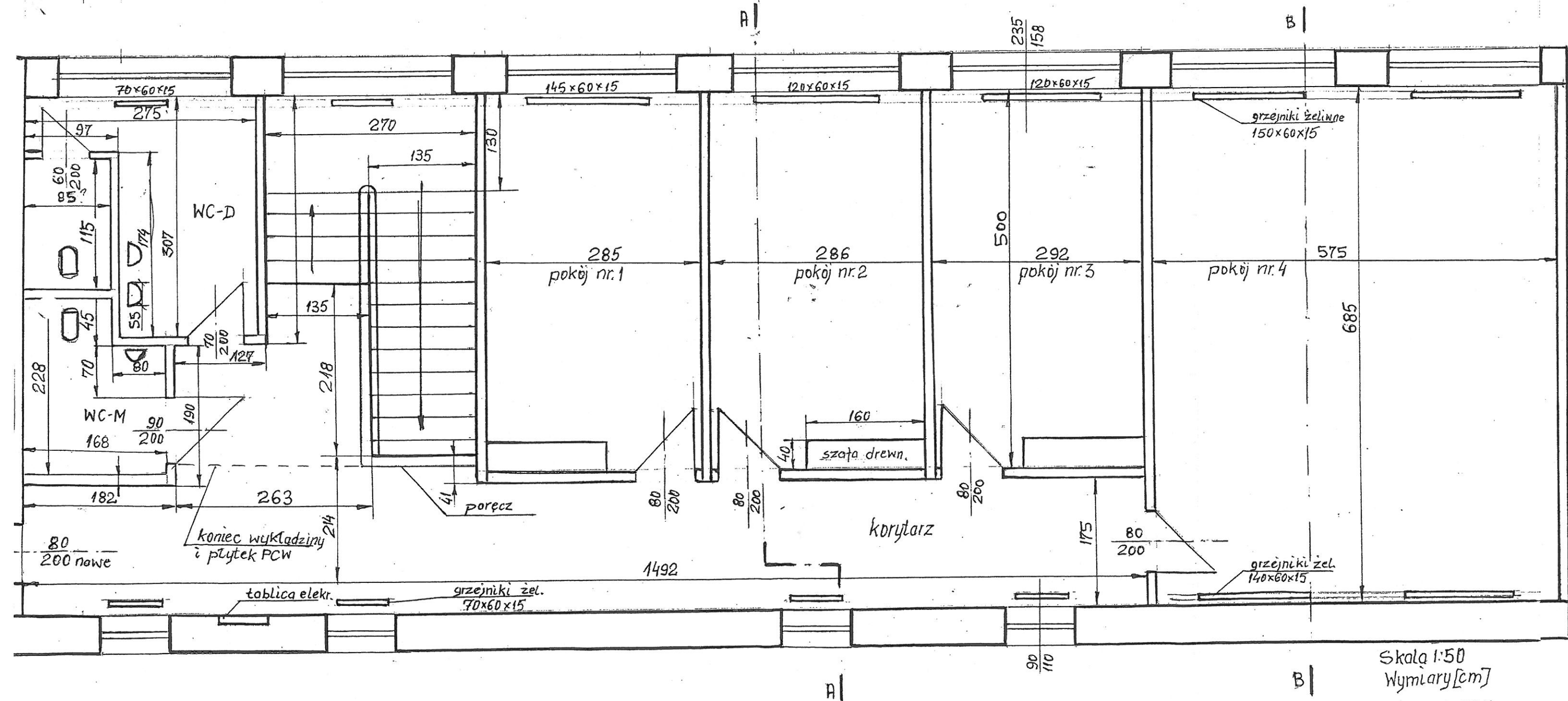
VI-20Mr.

B-B



A

B



Skala 1:50
Wymiary [cm]

VI-2011r.

B-B

I piętro

Przystan'

4 szt.

30

16

rura kwad
20x20mm

plaskownik
40x8mm + kiedra
Pcv

plaskownik

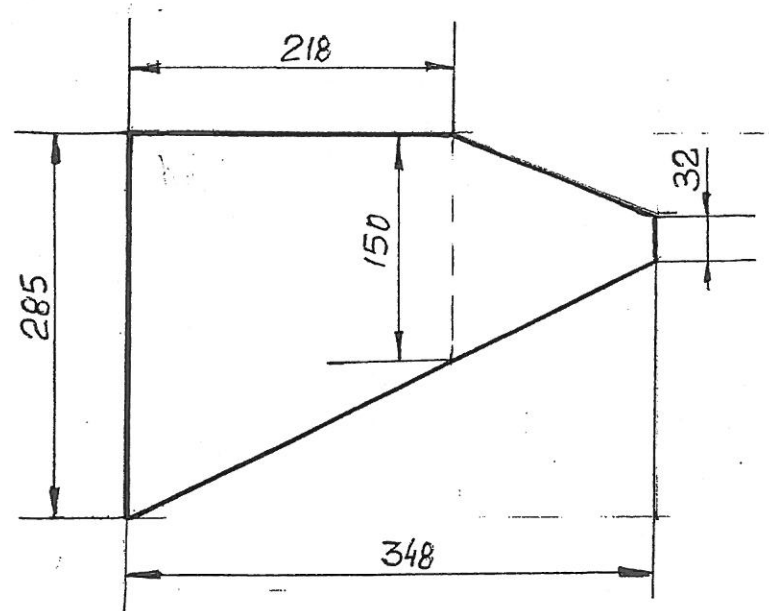
12 szt.

Parter

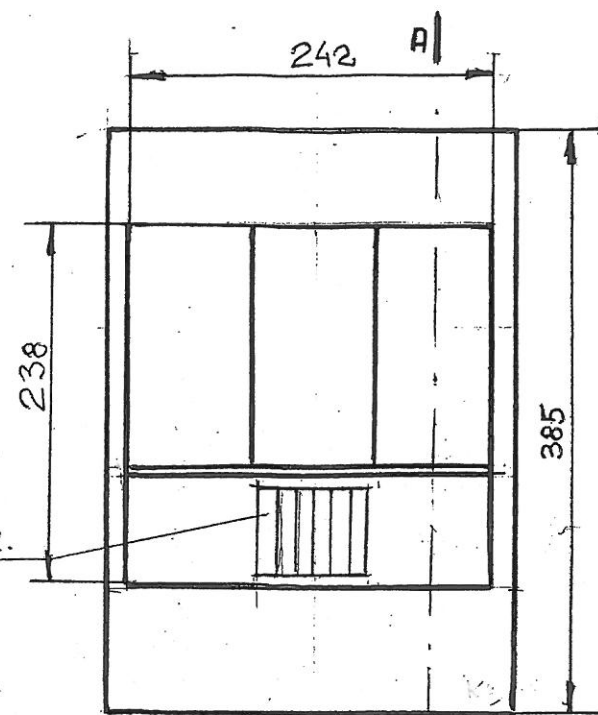
Skala 1:20

Klatka schodowa - widok ścian II sr.

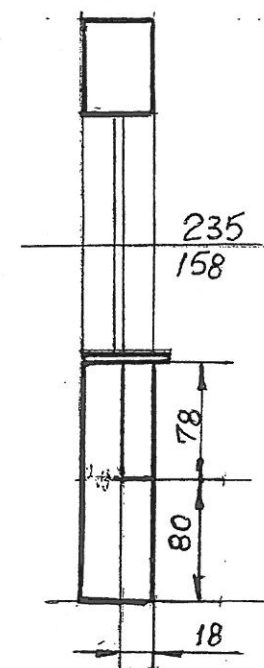
Widok .W1'



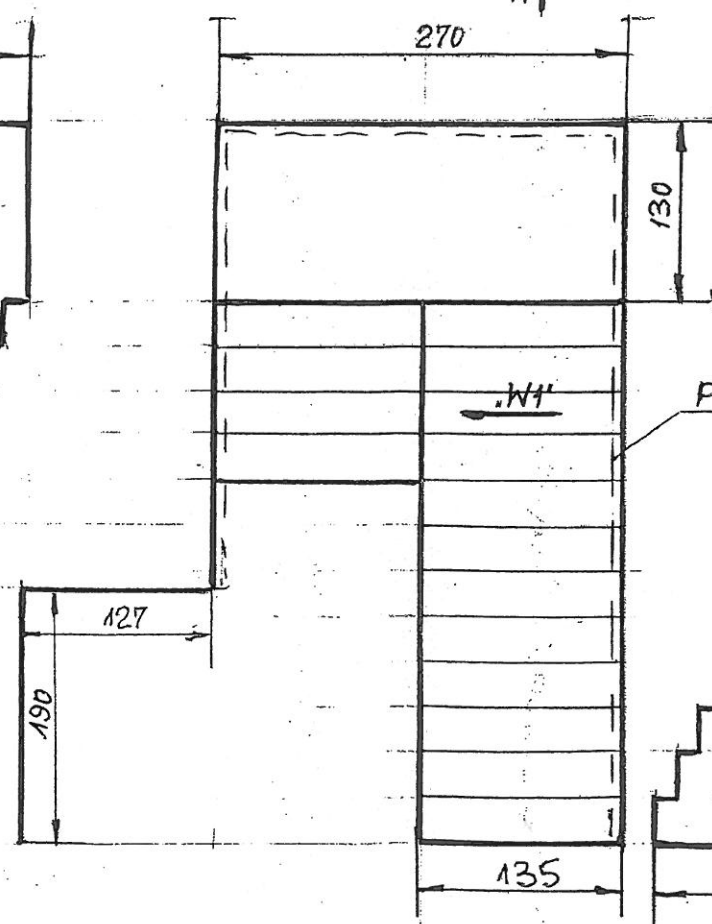
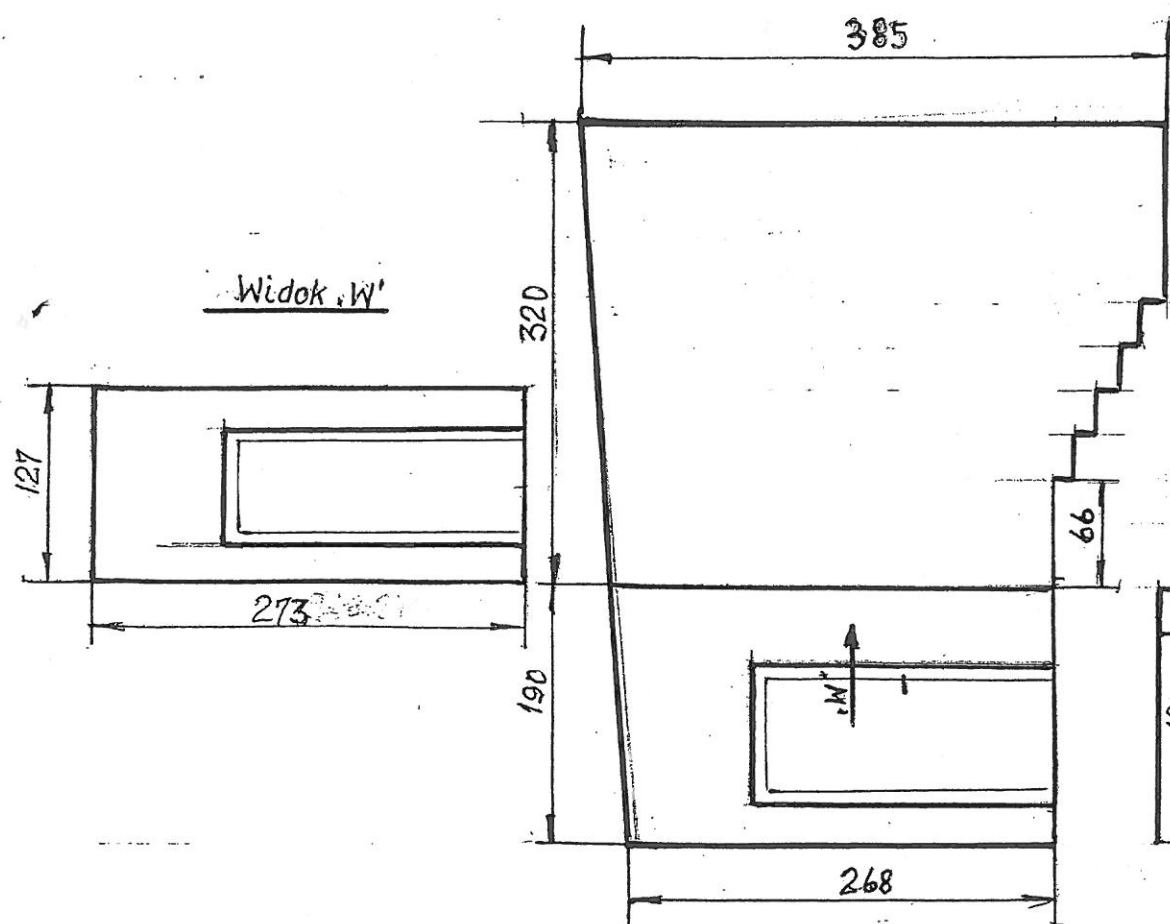
grzejnik żel.
70x60



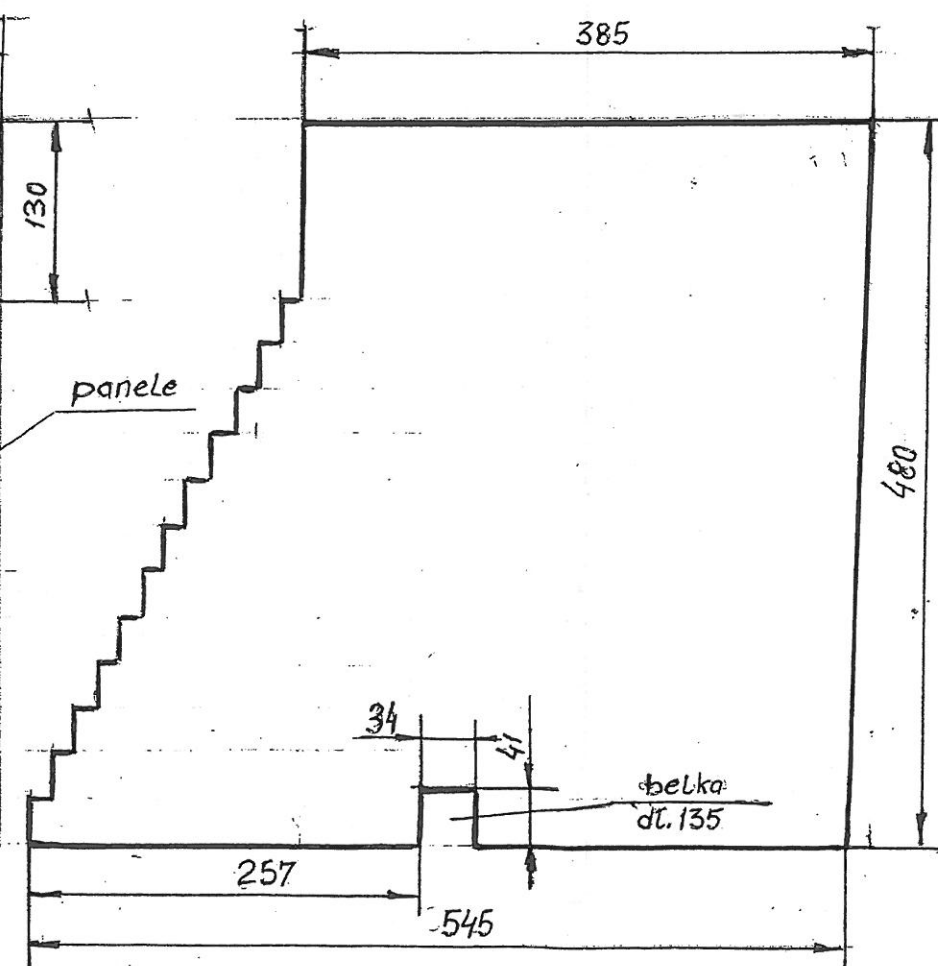
A-A



Widok .W1'



panele



belka
dł. 135

Skala 1:50
Wymiary [cm]

VI-2011r.

Stan projektowany
Skala 1:100

